



Modern fire with unmatched versatility

Set the scene even when your fire is not burning - capture the alluring statement of sparkling glass or the tranquil sense of river rock with gentle interior illumination.

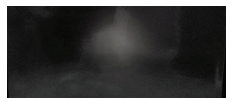
Perfectly suited for smaller spaces, the WS38 comes complete with interior lighting and Town & Country's unmatched Design-A-Fire versatility. Let the WS38 take you one step further in creating the ultimate contemporary landscape fireplace.

PRODUCT FEATURES

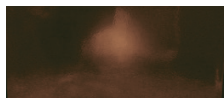
- Clean Face wide screen format
- Huge ceramic disappearing glass
- Create your perfect fire inside the firebox with Design-A-Fire
- Integrated Micro-Mesh Safety Screen
- Overhead LED Interior Lighting
- Natural gas or propane
- Battery back-up to operate during power outages
- Versatile Installation up to 110 feet from an exterior wall with optional power venting
- Superior materials and construction
- Full integration with Smart Home Control Systems
- Total square inches of viewing area: 478
- BTU Input NG/LP: 47,000 high, 35,000 low
- Efficiency 38.4% (Based on CPSA P.4.1-15)

Please note: Due to elevation and fuel type, flame characteristics may not be exactly as shown.

FIREBOX PANEL OPTIONS



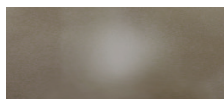
BLACK PORCELAIN



COFFEE BEAN BROWN PORCELAIN



COPPER PORCELAIN

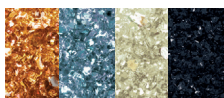


TITANIUM PORCELAIN

BURNER OPTIONS



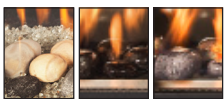
BLACK DIAMOND BURNER



TUMBLLED GLASS IN 4 COLORS

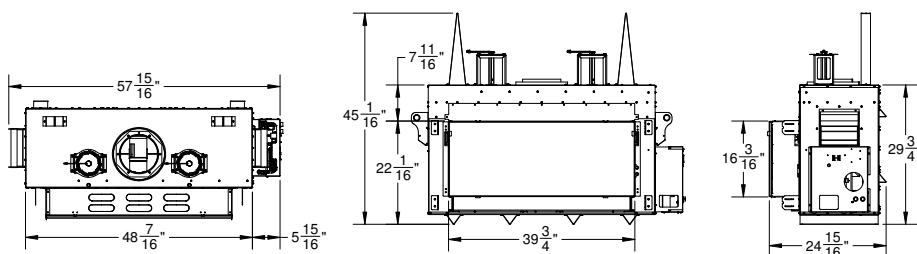


REFLECTIONS BURNER



RIVER ROCK IN 3 FINISHES

DIMENSIONS (SERIES D)



Weight: 411 lbs.