

WOOD FIREPLACES,  
STOVES & INSERTS

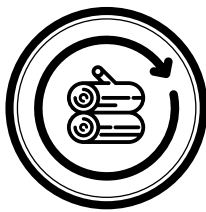


[www.regency-fire.com](http://www.regency-fire.com)



**WOOD FIREPLACES,  
STOVES & INSERTS**

# BURNING WOOD - A GREEN CHOICE



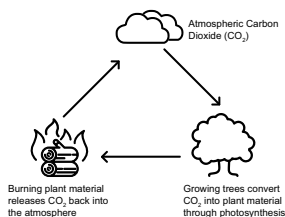
## RENEWABLE ENERGY

Wood is a renewable natural resource. Well-managed forests are a renewable, sustainable source of energy that help reduce greenhouse gas emissions and our reliance on oil & gas.



## WOOD IS AFFORDABLE

Reduce your dependence on high priced, non-renewable home heating fuels by burning wood. Turn your furnace down and enjoy comforting warmth with a Regency wood product. Whether you buy your wood or collect it yourself, you'll notice savings within the first year.



## WOOD IS CARBON NEUTRAL

As trees grow they absorb carbon dioxide from the atmosphere. When trees die and are left to decompose in the forest or burn in forest fires, the carbon stored in these trees gets released into the atmosphere as carbon dioxide.

**Did you know?** Burning firewood produces the same amount of carbon dioxide as it has absorbed during its life cycle - making wood burning carbon neutral.



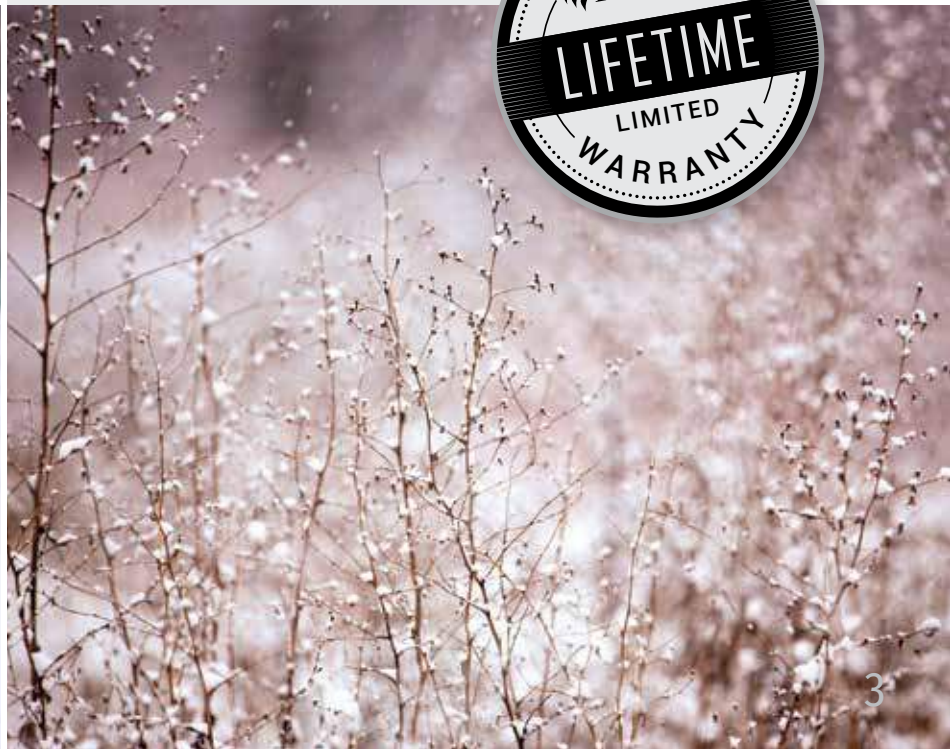
## EPA CERTIFIED\*

The Regency Wood Inserts, Fireplaces and Stoves in this brochure are tested and certified to the strictest clean air standards as set by the United States Environmental Protection Agency (EPA).

\*2015 NSPS step 1 limits

# TABLE OF CONTENTS

<i>Regency Alterra® Wood Insert</i> <b>Ci1250</b>	<b>04</b>
<i>Regency Classic™ Wood Inserts</i> <b>i1200 &amp; H2100</b>	<b>06</b>
<b>i2400 &amp; i3100</b>	<b>08</b>
<i>Hampton® Wood Inserts</i> <b>Hi200 &amp; Hi300</b>	<b>10</b>
<i>Regency Wood Fireplaces</i> <b>R90 &amp; EX90</b>	<b>12</b>
<i>Regency Classic™ Wood Stoves</i> <b>F1100, F2400, S2400 &amp; F3100</b>	<b>14</b>
<i>Hampton® Wood Stoves</i> <b>H200 &amp; H300</b>	<b>16</b>
<i>Technology</i>	<b>18</b>
<i>Accessories</i>	<b>20</b>
<i>Technical Specs</i>	<b>21</b>







Alterra Ci1250 wood insert.

## REGENCY ALTERRA® WOOD INSERT | Ci1250

### TRANSFORM YOUR FIREPLACE - Ci1250

The Regency Alterra Wood Insert is the next generation in contemporary fireplace design. It combines our unparalleled tradition of high quality and industry leading engineering with a sleek, modern design. The Alterra features a flush door and surround that transforms inefficient fireplace openings into style savvy, efficient heaters.

### HEATING THE FARTHEST CORNER IN YOUR ROOM

Turn that cold corner into a cozy nook. Regency's 2 speed, flush mount, blower (included) will distribute heat into the farthest corners of your room.

#### SPECIFICATIONS

Maximum BTU*	55,000
Typical Sq. Ft. Heated**	600 - 1,000
Optimum Efficiency	77.7%
Maximum Log Size	18"
Burn Time (Typical)*	up to 8 hrs.
Emissions (grams/hour)	3.0
Firebox Size	1.4 cu. ft.
Flue Size	6"

#### MINIMUM FIREPLACE OPENING

Width	25"
Height	23"
Depth (with standard adaptor)	15-1/16"
Depth (with offset adaptor)	17-11/16"

\* Length of burn time and BTU range depend on type of wood, moisture content, climate conditions and installation.

\*\* Varies depending on home floor plan, house layout, heat loss of the house and quality/moisture content of wood.



*Alterra Ci1250 wood insert.*

## STANDARD FEATURES

- EPA Certified\*
- 1.4 cu. ft. firebox accommodating 18" logs
- Single lever air control
- High performance brick-lined firebox
- Clean glass airwash system
- Reversible cast iron door with removable handle
- Ceramic glass
- 170 sq. in. viewing area
- Black cast iron faceplate
- Flush mount 2 speed blower

## OPTIONS

- Standard or custom made backing plates
- Standard or 4-1/2" offset flue adaptor (patented)
- Regency stainless steel flex liner kits
- Flue connectors
- Wrap insulation kits



*\*2015 NSPS step 1 limits*







Hearth Heater H2100 with black door, regular faceplate and 2 speed blower.

## REGENCY CLASSIC™ WOOD INSERTS | i1200 • H2100

### INCREDIBLE HEAT FOR ANY SIZED ROOM - i1200

The Regency i1200 Classic Wood Insert is ideal for charming hearths that aren't quite big enough for standard inserts and spaces that invite a more compact style of fireplace. This small insert delivers a generous 55,000 BTUs of heat and offers a dramatic view through a large glass door.

### NO POWER, NO PROBLEM - H2100 HEARTH HEATER

The Hearth Heater combines the best qualities of the Classic Stove and Insert series. It eliminates the cold draft of an open fireplace, and because it sits out on the hearth, it gives you both convective and radiant heat. Like all Regency products, the Hearth Heater operates during power outages, providing a convenient cooktop surface as well.

SPECIFICATIONS	i1200	H2100
Maximum BTU*	55,000	70,000
Typical Sq. Ft. Heated**	600 - 1,000	800 - 1,500
Optimum Efficiency	77.7%	84.9%
Maximum Log Size	18"	18"
Burn Time (Typical)*	up to 8 hrs.	up to 8 hrs.
Emissions (grams/hour)	3.0	3.5
Firebox Size	1.4 cu. ft.	1.6 cu. ft.
Flue Size	6"	6"

MINIMUM FIREPLACE OPENING		
Width	23"	-
Height	19"	20"
Depth (with standard adaptor)	13-3/4"	-
Depth (with offset adaptor)	16-1/2"	-

\* Length of burn time and BTU range depend on type of wood, moisture content, climate conditions and installation.

\*\* Varies depending on home floor plan, house layout, heat loss of the house and quality/moisture content of wood.



*Regency i1200 with nickel accent door, regular faceplate and 2 speed blower.*

## STANDARD FEATURES

- EPA Certified\*
- Single rod air control
- High performance brick-lined firebox
- Clean glass airwash system
- Convector airmate (H2100 only)

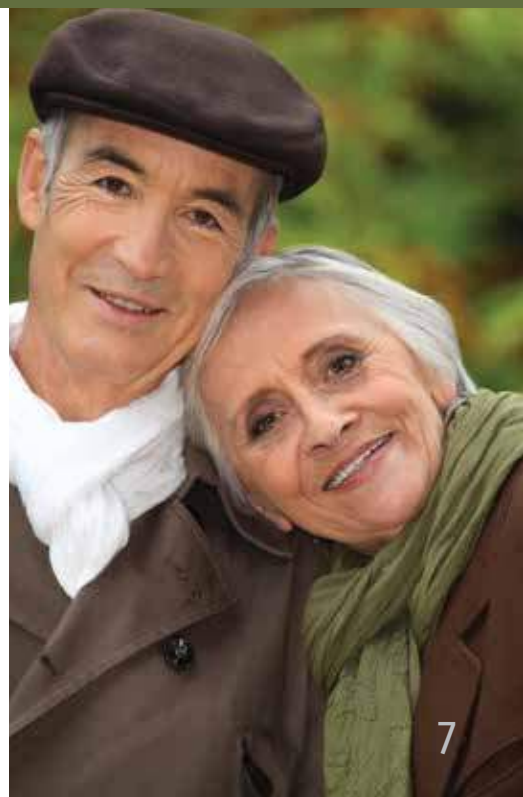


\*2015 NSPS step 1 limits

## OPTIONS

- Cast iron door with ceramic glass in black\*\* or nickel accent
- Contemporary cast iron door (i1200 only)
- Regular or oversize faceplate (black trim included)
- Screen door (i1200 only)
- 2 speed blower
- Cast iron legs in black or brushed nickel (H2100 only - see diagram on p.26)
- Standard or 4-1/2" offset flue adaptor (patented - i1200 only)
- Regency stainless steel flex liner kits
- Flue connectors
- Wrap insulation kits

\*\* Black door comes with nickel handles and nickel hinge caps







*Regency i2400 with nickel accent door, black convection grills, regular faceplate and 2 speed blower.*

# REGENCY CLASSIC™ WOOD INSERTS | i2400 • i3100

## ZONE HEAT FOR LOWER HEATING BILLS - i2400

Open masonry fireplaces allow as much as 90% of a fire’s heat to escape out the chimney. Regency Classic Wood Inserts keep the heat in your home. Regency Inserts are ready to install and they fit easily into your existing fireplace. Increase the value of your home while you decrease your monthly heating bill!

## A SIZE PERFECT FOR ANY ROOM - i3100

Regency’s Wood Inserts are available in a variety of sizes generating up to 75,000 BTUs of heat, heating up to 3,000 square feet, with burn times of up to 10 hours. All Regency Wood Inserts come equipped with an airwash system that keeps the glass door cleaner longer for a better view of the fire.

SPECIFICATIONS	i2400	i3100
Maximum BTU*	75,000	80,000
Typical Sq. Ft. Heated**	1,000 - 2,000	1,800 - 3,000
Optimum Efficiency	77%	75.4%
Maximum Log Size	18"	21"
Burn Time (Typical)*	up to 8 hrs.	up to 10 hrs.
Emissions (grams/hour)	3.4	4.2
Firebox Size	2.3 cu. ft.	2.9 cu. ft.
Flue Size	6"	6"

MINIMUM FIREPLACE OPENING		
Width	25"	28"
Height	21-1/2"	25"
Depth	17"	17"

*\* Length of burn time and BTU range depend on type of wood, moisture content, climate conditions and installation.  
 \*\*Varies depending on home floor plan, house layout, heat loss of the house and quality/moisture content of wood.*





*Regency i3100 with black door, black convection grills, regular faceplate and 2 speed blower.*

## STANDARD FEATURES

- EPA Certified\*
- Single rod air control
- High performance brick-lined firebox
- Clean glass airwash system
- Black convection grills
- Mobile home approved (i2400 only)



\*2015 NSPS step 1 limits

## OPTIONS

- Cast iron door with ceramic glass in black\*\* or nickel accent
- Nickel convection grills
- Regular or oversized faceplate (black trim included)
- Screen door
- 2 speed blower
- Regency stainless steel flex liner kits
- Flue connectors
- Wrap insulation kits

\*\* Black door comes with nickel handles and nickel hinge caps





Hampton Hi300 wood insert in timberline brown enamel finish with decorative cast grille.

HAMPTON® WOOD INSERTS | Hi200 • Hi300

HIGH EFFICIENCY HEAT

Hampton cast iron wood inserts install easily into your existing fireplace to add the timeless beauty of cast iron and to eliminate open fireplace drafts.

PERFECT SOLUTION

These fireplace inserts deliver up to 75,000 BTU of high efficiency heat, circulating comforting warmth to the living areas you spend time in. Decrease your heating bills and increase the value of your home with one of two inserts sized to fit your fireplace and your style.

SPECIFICATIONS	Hi200	Hi300
Maximum BTU*	55,000	75,000
Typical Sq. Ft. Heated**	600 - 1,000	1,000 - 2,000
Optimum Efficiency	77.7%	77.0%
Maximum Log Size	18"	18"
Burn time (Typical)*	up to 8 hrs.	up to 8 hrs.
Emissions (grams/hour)	3.0	3.4
Firebox Size	1.4 cu.ft.	2.3 cu.ft.
Flue size	6"	6"
Shipping Weight	258 lbs	437 lbs

MINIMUM FIREPLACE OPENING		
Width (front)	25"	25"
Height	19-5/8"	21-1/2"
Depth	15-1/16"	17-1/2"
Depth (with offset flue to center of flue)	15-1/16"	--

\* Length of burn time and BTU range depend on type of wood, moisture content, climate conditions and installation.  
\*\* Varies depending on home floor plan, house layout, heat loss of the house and quality/moisture content of wood.





*Hampton Hi200 wood Insert in black finish.*

## STANDARD FEATURES

- EPA Certified\*
- Single rod draft control
- Airwash system
- Brick-lined firebox
- Cast iron door with oak handle
- Cast grille (Hi200)
- Ceramic glass
- Burn time: up to 8 hrs
- 6" flue

## OPTIONS

- Black or timberline brown enamel finish
- 2 speed blower
- Faceplates in two sizes (Hi300)
- Cast grille (Hi300)
- Power outlet conversion (Hi300)
- Standard or offset flue adaptor (Hi200)
- Stainless steel liner kit
- Flue connectors
- Wrap insulation kits



\*2015 NSPS step 1 limits



*Hi300 with oversize faceplate in black finish.*



*Hi200 in timberline brown enamel finish.*



Classic R90 featuring black louvers.

REGENCY WOOD FIREPLACES | R90 • EX90

A FURNACE WITH A VIEW - EX90

Regency’s high efficiency fireplaces put a designer face on a hard working heater. Offering timeless appeal, the Excalibur fireplace is defined by the large arched viewing area that frames a captivating wood fire. Just load up your Regency & tuck in for a cozy night’s sleep.

A HARD WORKING HEATER - R90

Delivering up to 70,000 BTUs of high efficiency heat, your Regency will burn for up to 8 hours. The simple and reliable all-in-one draft control rod allows you to choose a slow burning fire with less heat, or a robust, crackling fire that can take the chill out of any room.

SPECIFICATIONS	R90 & EX90
Maximum BTU*	70,000
Typical Sq. Ft. Heated**	1,000 - 2,200
Optimum Efficiency	77.4%
Maximum Log Size	20"
Burn Time (Typical)*	up to 8 hrs.
Emissions (grams/hour)	3.72
Firebox Size	2.5 cu. ft.
Flue Size	8"

\* Length of burn time and BTU range depend on type of wood, moisture content, climate conditions and installation.  
\*\* Varies depending on home floor plan, house layout, heat loss of the house and quality/moisture content of wood.





Excalibur® EX90 shown with Excalibur front in black.

## STANDARD FEATURES

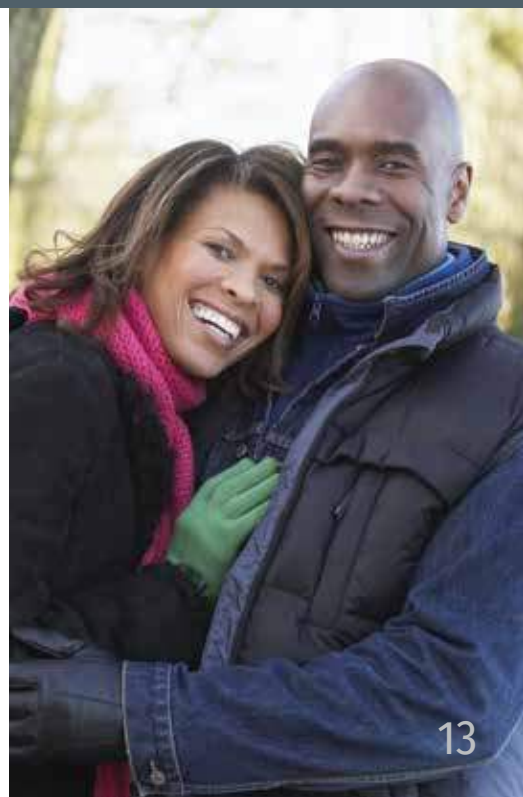
- EPA Certified\*
- Single rod air control
- High performance brick-lined firebox
- Clean glass airwash system
- Black cast iron double doors
- Ceramic glass
- Andirons
- Outside air kit



\*2015 NSPS step 1 limits

## OPTIONS

- Black louvers (R90)
- Excalibur arch front in black (EX90)
- Variable speed blower
- Ash drawer
- Screen door
- Gravity air vent kit
- HeatWave™ kit (Canada only)
- 8" - 7" flue adaptor (Canada only)
- 8" Air cooled pipe adaptors (US only)





*F2400 shown with legs, nickel accent door and airmate.*

**REGENCY CLASSIC™ WOOD STOVES** | F1100 • F2400 • S2400 • F3100

**CLASSIC DESIGN IN THREE SIZES - F1100, F2400, F3100**

The timeless styling of the Classic Wood Stove comes in three sizes producing 55,000 to 80,000 BTUs of toasty warmth for a single living area or an entire home. Up to 77% efficiency means any room can be heated quickly.

**CLOSEST CLEARANCES IN THE INDUSTRY - S2400**

The special design of the Step Top Classic makes it possible to be placed close to a corner or a wall. All Regency wood products offer an optional two speed blower to help deliver high efficiency heat to the far reaches of your home.

SPECIFICATIONS	F1100 SMALL	F2400 MEDIUM	S2400 MEDIUM	F3100 LARGE
Maximum BTU*	55,000	75,000	75,000	80,000
Typical Sq. Ft. Heated**	600 - 1,200	1,000 - 2,200	1,000 - 2,200	2,000 - 3,500
Optimum Efficiency	77.7%	77%	77%	75.4%
Maximum Log Size	18"	18"	18"	21"
Burn Time (Typical)*	up to 8 hrs.	up to 8 hrs.	up to 8 hrs.	up to 10 hrs.
Emissions (grams/hour)	3.0	3.4	3.4	4.2
Firebox Size	1.4 cu. ft.	2.3 cu. ft.	2.3 cu. ft.	2.9 cu. ft.
Flue Size	6"	6"	6"	6"

\* Length of burn time and BTU range depend on type of wood, moisture content, climate conditions and installation.

\*\* Varies depending on home floor plan, house layout, heat loss of the house and quality/moisture content of wood.





*F2400 shown with pedestal and contemporary door.*



*S2400 shown with pedestal and nickel accent door.*

## STANDARD FEATURES

- EPA Certified\*
- Single rod air control
- High performance brick-lined firebox
- Clean glass airwash system
- Ceramic glass
- Rear heat deflector
- Mobile home and alcove approved
- Closest clearances in the industry



\*2015 NSPS step 1 limits

## OPTIONS

- Cast iron door with ceramic glass in black\*\* or nickel accent
- Contemporary door in black
- Pedestal base
- Cast iron legs in black or brushed nickel
- Bottom heat shield (when using legs)
- Ash drawer
- 2 speed blower
- Screen door
- Convector airmate (F series only)
- Outside air kit



*F2400 shown with pedestal and black door*



*F2400 shown with legs, nickel accent door and airmate*



*S2400 shown with pedestal and black door*

\*\* Black door comes with nickel handles and nickel hinge caps



Hampton H200 medium wood stove in charcoal gray finish.

HAMPTON® WOOD STOVES | H200 • H300

COMFORT AND CONVENIENCE

Convenient and efficient, Hampton wood stoves keep your home comfortable all year – even during power outages. Add a 2 speed blower to circulate even more heat.

BEAUTIFUL COMBINATION

A beautiful combination of soft lines and delicate textures make this cast iron stove the perfect artistic backdrop for a roaring fire. Choose from two types of finishes to suit your decor, and get ready to enjoy all the comforts that only a Regency Wood Stove can provide.

SPECIFICATIONS	H200	H300
Maximum BTU*	38,800	45,500
Typical Sq. Ft. Heated**	600 - 1,000	1,000 - 2,000
Optimum Efficiency	83.9%	83.6%
Maximum log size	16"	18"
Burn time (Typical)*	up to 6 hrs.	up to 8 hrs.
Emissions (grams/hour)	3.9	4.1
Firebox size	1.34 cu. ft.	1.71 cu. ft.
Flue size	6"	6"
Shipping Weight	417 lbs	474 lbs

\* Length of burn time and BTU range depend on type of wood, moisture content, climate conditions and installation.  
\*\* Varies depending on home floor plan, house layout, heat loss of the house and quality/moisture content of wood.





*Hampton H300 large wood stove shown with optional side shelves in timberline brown enamel finish.*

## STANDARD FEATURES

- EPA Certified\*
- Single draft lever control
- Airwash system
- Brick-lined firebox
- Cast iron door with oak handle
- Cast grille
- Ceramic glass
- Standard legs
- Top or rear vent
- 6" flue
- Ash drawer (H300 - use with standard legs only)
- Front and side door loading (H300)
- Cast iron cooktop surface (H300)

## OPTIONS

- Charcoal gray or timberline brown enamel finish
- Matching side shelves (set of two)
- Matching short cast legs
- 2 speed blower
- Outside air adaptor (use with standard legs only)
- Ash drawer (H200 - use with standard legs only)
- Stainless steel liner kits (into masonry chimney only)
- Wrap insulation kits (into masonry chimney only)



*H300 shown in charcoal gray finish.*



*H200 shown with optional side shelves in timberline brown enamel finish.*

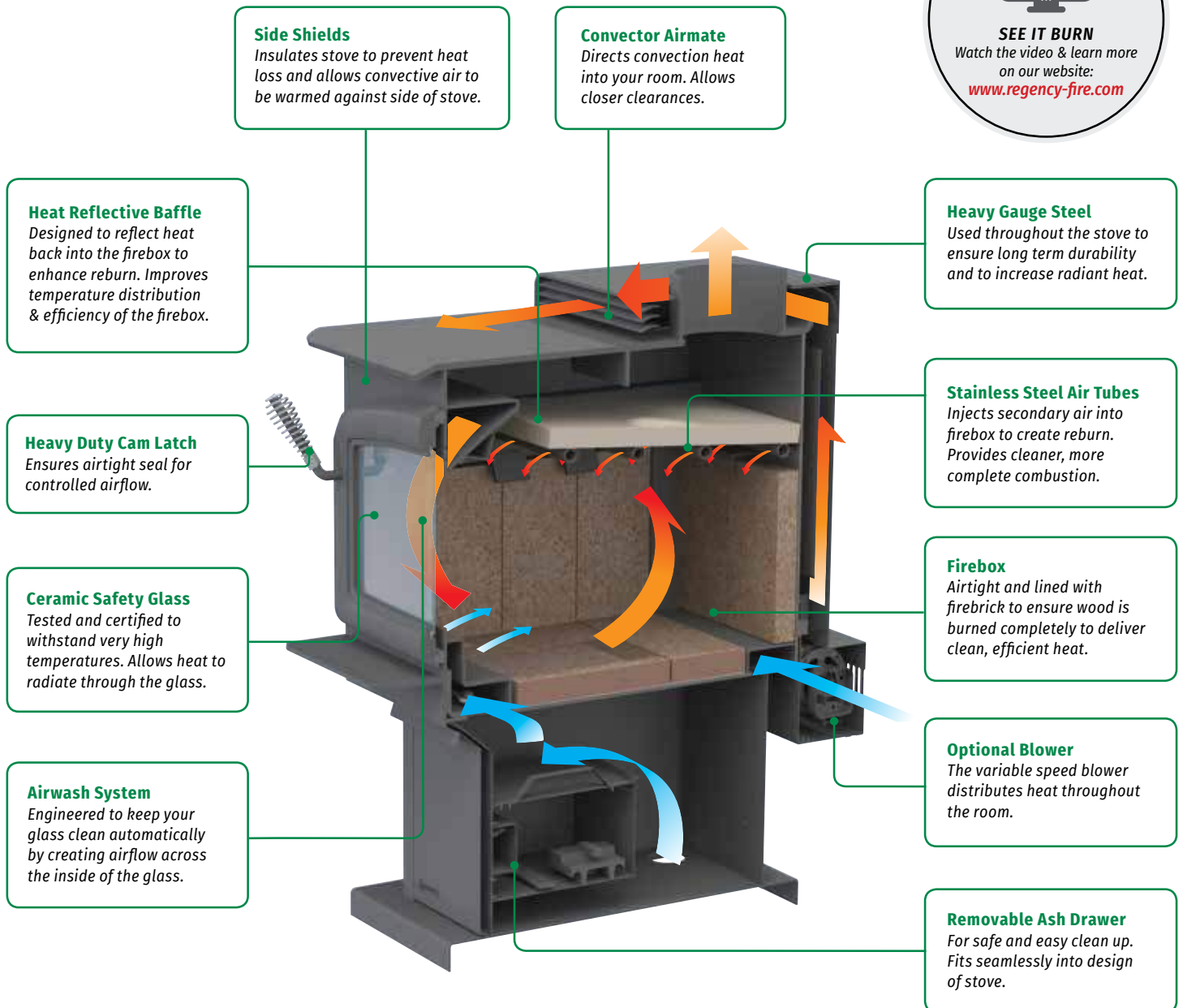


*H200 shown with short cast legs in charcoal grey finish.*

# REGENCY WOOD PRODUCTS

## HOW DOES **NON-CATALYTIC “2-STAGE BURN” TECHNOLOGY** WORK?

The airflow in the firebox is directed in such a way that fuel is burned in 2 stages: Once during initial combustion, and again when smoke is re-burned. This 2-stage burn creates greater efficiency and a spectacular fire to look at, and it results in cleaner emissions. By combining non-catalytic technology with durable construction, Regency builds wood fireplaces that last - we guarantee it.

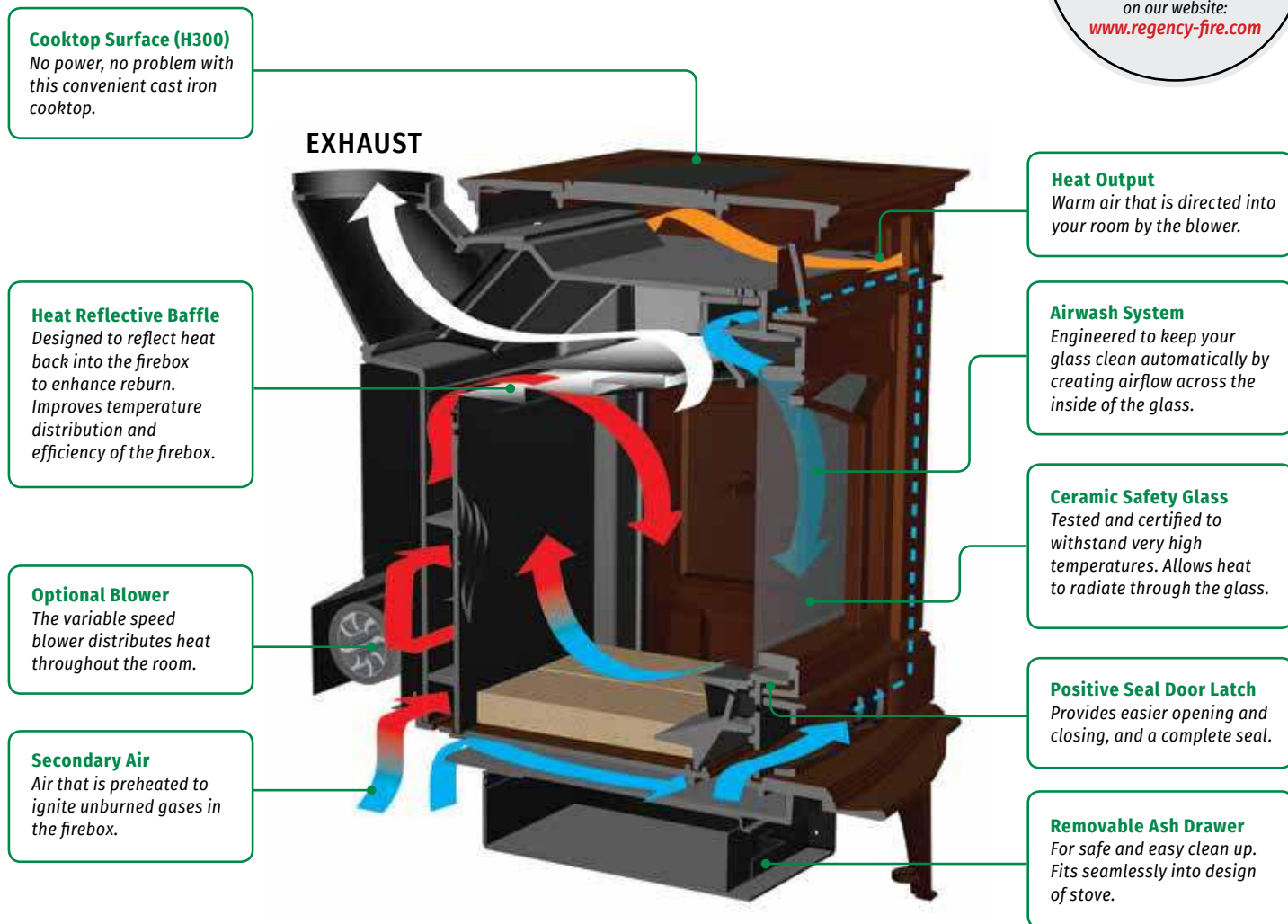


\*Not shown in diagram



## HOW DOES **NON-CATALYTIC “2-STAGE BURN” TECHNOLOGY** WORK?

The airflow in the firebox is directed in such a way that fuel is burned in 2 stages: Once during initial combustion, and again when smoke is re-burned. This 2-stage burn creates greater efficiency and a spectacular fire to look at, and it results in cleaner emissions. By combining non-catalytic technology with durable construction, Regency builds wood fireplaces that last - we guarantee it.



\*Not shown in diagram

**Single Rod Draft Control**  
Simple and easy to control heat output and size of fire.

# ACCESSORIES

## CONVENIENT ASH REMOVAL SYSTEM



*Pull out drawer*



*Slide cover on top*



*Carry away*

## BASE OPTIONS



*Brushed nickel cast iron legs*



*Black cast iron legs*



*Black pedestal*

## CAST IRON DOORS



*Black cast iron door  
(includes nickel handle  
and hinge caps)*



*Nickel accent cast iron door  
(includes nickel handle  
and hinge caps)*



*Contemporary door  
(includes cast handle  
and hinge caps)*

## CONVECTOR AIRMATE



The convector airmate scoops super heated air from the back and top of the stove and directs it to the living area in front. This heat dispersion reduces temperatures behind the unit and allows it to be installed even closer to the wall.

## SCREEN DOORS



*For Regency classic wood  
stoves and inserts\**



*For R90 & EX90  
wood fireplaces*

*\* Note: Screen doors are not approved with units C1250 and H2100.*

## POWERFUL BLOWER

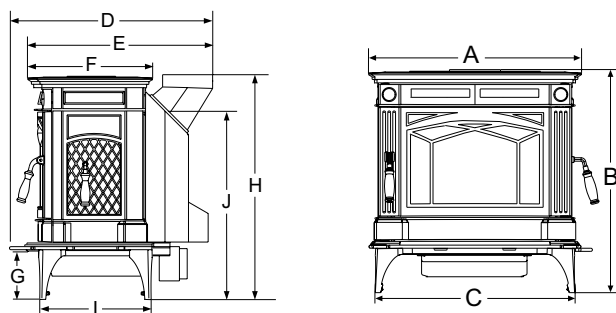


The blower can dramatically increase the circulation of heat in your home. It includes multiple speed settings and an automatic heat sensor which turns the blower on and off at predetermined temperatures.



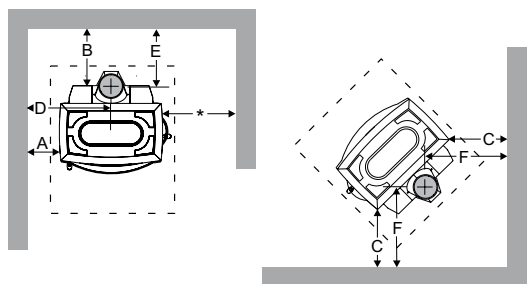
# SPECIFICATIONS - HAMPTON WOOD PRODUCTS

## HAMPTON WOOD STOVES



DIMENSIONS	H200	H300
A	23-7/8"	27"
B	27-5/8"	29-3/4"
B (short legs)	22-5/8"	24-3/8"
C	22-1/8"	25-1/2"
D	25-1/8"	26"
E	21"	24"
F	16"	16-1/8"
G	7-1/8"	7-1/8"
H	28-3/4"	30-1/4"
H (short legs)	23-3/4"	24-3/4"
I	15"	15"
J*	25-7/8"	27-1/4"
J* (short legs)	21"	22-1/8"

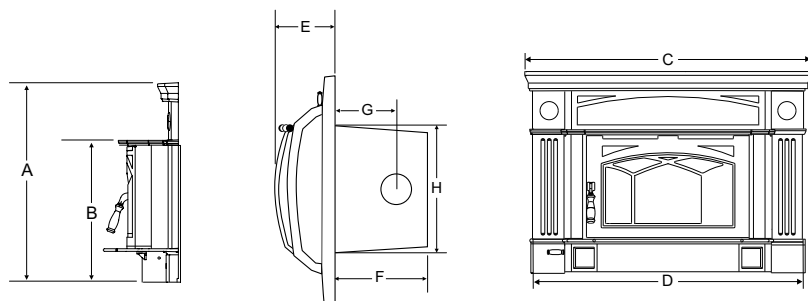
\* to center line if rear vented.



MINIMUM CLEARANCE TO COMBUSTIBLES		A	B	C	D	E	F
H200	Residential Installation C Vent	17"	15"	13"	29"	17-1/8"	19-7/8"
	Residential Close Clearance	15"	10"	9"	27"	12-1/8"	15-7/8"
	Mobile Home Close Clearance	15"	10"	9"	27"	12-1/8"	15-7/8"
H300	Residential Installation C Vent	17"	15"	13"	30"	15"	19"
	Residential Close Clearance	15"	10"	9"	28"	10"	15"
	Mobile Home Close Clearance	15"	10"	9"	28"	10"	15"

NOTE: In Canada floor protection must extend 18" to the front and 8" to the sides and back. With side load door (H300 only) floor protection must extend 18" to the side. In USA same as above except floor protection extends 6" to sides and back. Minimum clearance with side load door is 18" to side wall. Refer to dimension (B) for clearance without side load door.

## HAMPTON WOOD INSERTS



DIMENSIONS	Hi200	Hi300	Hi300 OVERSIZE
A	27-1/4"	30"	34-9/16"
B	19"	21-1/2"	21-1/2"
C	39-13/16"	42-1/2"	51-7/8"
D	38-5/16"	40"	48-1/16"
E	6-3/8"	11-3/8"	12-3/16"
F	15-1/16"	17-1/4"	16-1/2"
G (regular)	9-5/8"	11-1/8"	10-7/16"
G (offset adaptor)	14-1/8"	--	--
H	21-1/4"	23-3/4"	23-3/4"

### Masonry & Factory Built Fireplace Clearances

The minimum required clearances to combustible materials when installed into a masonry fireplace are:

UNITS	ADJACENT SIDE WALL (TO SIDE)	MANTEL (TO TOP)	TOP FACING (TO TOP)***	SIDE FACING (TO SIDE)***	MIN. HEARTH EXTENSION*	MIN. HEARTH THICKNESS*	MIN HEARTH SIDE EXTENSION**
	A	B	C	D	E	F	G
Hi200	15"	20"	14"	7-3/8"	18" CA/16" US	1-1/2"	8" CA/6" US
Hi300 (regular faceplate)	11"	20"	12"	8"	18" CA/16" US	1/2"	8"
Hi300 (oversize faceplate)	11"	20"	14"	11"	18" CA/16" US	1/2"	8"

\* Note: If the hearth extension is flush with the floor (item F) it must extend 19.5" in front of the body face (item E).

\*\* Note: Hearth extension width (G) is measured from edge of fuel door to side of hearth.

\*\*\* up to 1-1/2" thick.

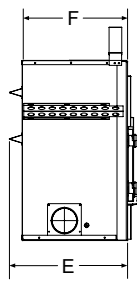
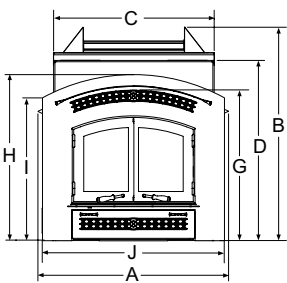
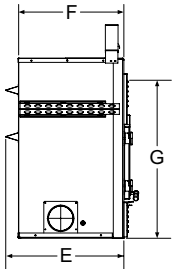
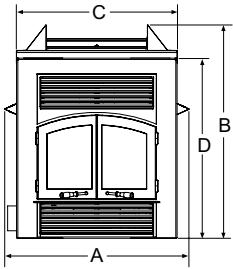
NOTE: All product specifications are subject to change without notice. Before installing refer to the relevant product manual for full and up-to-date information.

# SPECIFICATIONS - WOOD FIREPLACES & STOVES

## R90 & EX90

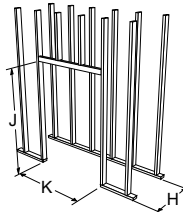
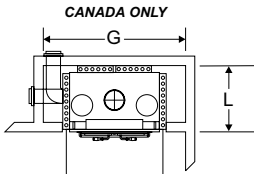
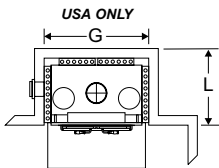
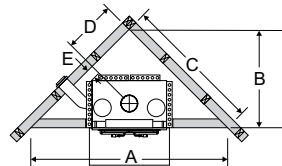
DIMENSIONS - R90

DIMENSIONS - EX90



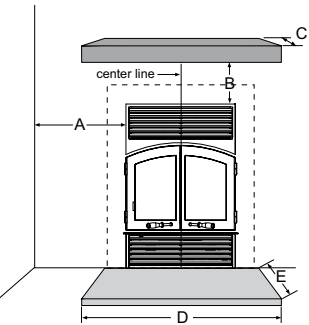
	R90	EX90
A	43-5/8"	43-5/8"
B	50-1/2"	50-1/2"
C	38"	38"
D	42-5/8"	42-5/8"
E	28"	28"
F	25"	25"
G	37-3/8"	29-1/8"
H	--	38-3/4"
I	--	33-3/4"
J	--	43"

### FRAMING - R90 & EX90

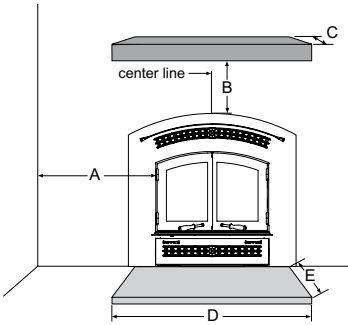


COUNTRY	A	B	C	D	E	G	H	J	K	L
USA	96-1/4"	48-1/2"	68"	24-1/2"	3"	36"	28"	50-3/4"	44"	28"
CANADA	115-3/8"	57-5/8"	81-1/2"	31-1/4"	9-3/4"	60"	28"	50-3/4"	44"	28"

### CLEARANCE TO COMBUSTIBLES - R90 & EX90



R90



EX90

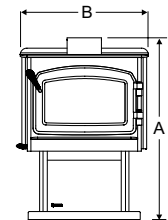
MINIMUM CLEARANCE TO COMBUSTIBLES		USA	CANADA
A	Side Wall From Louver Opening	18"*	24"*
B	Mantel Height (min.) From Louver Opening	18"*	18"*
C	Mantel Depth (max.)	10"	10"

\*EX90 measured prior to surround being installed.

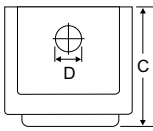
NON-COMBUSTIBLE HEARTH REQUIREMENT			
D	Hearth Width	40"	40"
E	Hearth Depth	18"	18"

US only: Chase must be ventilated with one 30 square inch vent grill. The vent grill must draw air from inside the home and not from outside.

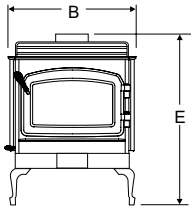
## F1100, F2400, S2400 & F3100



FRONT WITH PEDESTAL



TOP



FRONT WITH LEGS

UNITS	A	B	C	D	E
F1100	32-3/16"	24"	20"	6"	31-11/16"
F2400	36-5/16"	24"	27-3/16"	6"	33-1/2"
S2400	36-5/16"	24"	27-5/16"	6"	35-7/8"
F3100	35-1/4"	28"	24-15/16"	6"	34-3/4"

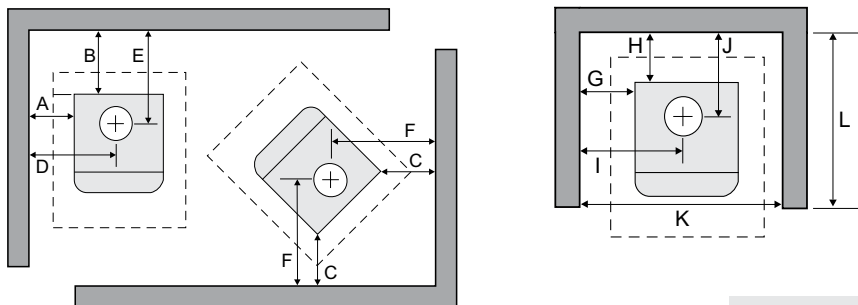


# SPECIFICATIONS - WOOD STOVES

## F1100, F2400, S2400 & F3100

### MINIMUM CLEARANCE TO COMBUSTIBLE MATERIALS

Please read the section below carefully as clearances depend on whether the optional airmate convector or the rear heat deflector is installed on the stove. Measurements "From Unit" are from the top plate of the stove to a side wall or to a corner, and from the rear heat shield to a back wall.



RESIDENTIAL INSTALLATION "C" VENT (SINGLE WALL)		FROM UNIT		FROM CORNER		FROM FLUE CENTER-LINE	
		A	B	C	D	E	F
F1100	with AirMate	13"	11"	8"	25"	17-1/2"	20"
	with Rear Deflector	15"	10-1/2"	11"	27"	17"	23"
F2400	with AirMate	16"	11"	6"	28"	17-1/2"	17-1/2"
	with Rear Deflector	18"	12"	6-1/2"	30"	18-1/2"	19-1/2"
S2400	with Step Top	16"	11"	6"	28"	17-1/2"	19"
F3100	with AirMate	18"	12"	8-1/2"	32"	18-1/2"	22"
	with Rear Deflector	20"	14"	10-1/2"	34"	20-1/2"	24"

These clearances are certified clearances for the stove, however, the clearance to the combustibles and the single wall stove pipe must also be maintained. You can reduce the stove pipe clearance with a stove pipe heat shield.

#### RESIDENTIAL CLOSE CLEARANCE (TO BE INSTALLED WITH REQUIRED PIPE COMPONENTS)

When the stove is installed as a close clearance residential unit, a listed double wall connector is required from the stove collar to the ceiling level.

RESIDENTIAL CLOSE CLEARANCE (TO BE INSTALLED WITH REQUIRED PIPE COMPONENTS)		FROM UNIT		FROM CORNER		FROM FLUE CENTER-LINE	
		A	B	C	D	E	F
F1100	with AirMate	9"	5"	3"	21"	11-1/2"	15"
	with Rear Deflector	13-1/2"	5"	5"	25-1/2"	11-1/2"	17"
F2400	with AirMate	15"	5-1/2"	4"	27"	12"	15-1/2"
	with Rear Deflector	15"	6-1/2"	6"	27"	13"	17-1/2"
S2400	with Step Top	15"	5-1/2"	4"	27"	12"	17"
F3100	with AirMate	16"	9-1/2"	8-1/2"	30"	16"	22"
	with Rear Deflector	20"	12"	8-1/2"	34"	18-1/2"	22"

#### MINIMUM ALCOVE CLEARANCE TO COMBUSTIBLE MATERIALS

The Regency® Freestanding models have been alcove approved and must be installed with a listed double wall connector to the ceiling level.

Note: Minimum alcove ceiling height: 83" for F5100 & F3500 and 84" for all other models

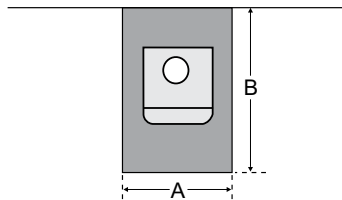
MINIMUM ALCOVE CLEARANCE		FROM UNIT		FROM FLUE CENTER-LINE		MIN. WIDTH	MAX. DEPTH
		G	H	I	J	K	L
F1100	with AirMate	11"	7"	23"	13.5"	46"	39"
	with Rear Deflector	13"	5"	25"	11.5"	50"	37"
F2400	with AirMate	15"	5-1/2"	27"	12"	54"	48"
	with Rear Deflector	15"	6-1/2"	27"	13"	54"	49"
S2400	with Step Top	15"	5-1/2"	27"	12"	54"	48"
F3100	with AirMate	16"	9.5"	30"	16"	60"	46-1/2"
	with Rear Deflector	not approved for Alcove					

#### MOBILE HOME CLOSE CLEARANCE (TO BE INSTALLED WITH REQUIRED PIPE COMPONENTS)

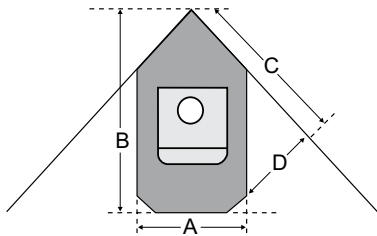
"C" Vent single wall pipe is not approved for mobile home installations. (Refer to mobile home instructions)

MOBILE HOME CLOSE CLEARANCE (TO BE INSTALLED WITH REQUIRED PIPE COMPONENTS)		FROM UNIT		FROM CORNER		FROM FLUE CENTER-LINE	
		A	B	C	D	E	F
F1100	with AirMate	11"	6"	6"	23"	12-1/2"	18"
	with Rear Deflector	13"	5"	9"	25"	11-1/2"	21"
F2400	with AirMate	15"	5-1/2"	4"	27"	12"	15-1/2"
	with Rear Deflector	15"	6-1/2"	6"	27"	13"	17-1/2"
S2400	with Step Top	15"	5-1/2"	4"	27"	12"	17"
F3100	with AirMate	18"	9-1/2"	10"	32"	16"	23-1/2"
	with Rear Deflector	20"	12"	10"	34"	18-1/2"	23-1/2"

# WOOD STOVES - FLOOR PROTECTION



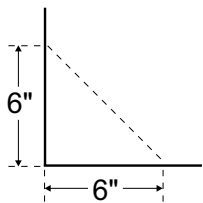
USA FLOOR PROTECTION FLUSH WALL HEARTH REQUIREMENTS		RESIDENTIAL "C" VENT		RESIDENTIAL CLOSE CLEARANCE		MOBILE HOME CLOSE CLEARANCE		ALCOVE	
		A	B	A	B	A	B	A	B
F1100	with AirMate	38"	38"	38"	37"	38"	38"	38"	38"
	with Rear Deflector	38"	38"	38"	37"	38"	37"	38"	37"
F2400	with AirMate	36"	46"	36"	45"	36"	45"	36"	45"
	with Rear Deflector	36"	46"	36"	45"	36"	45"	36"	45"
S2400	with Step Top	36"	46"	36"	45"	36"	45"	36"	45"
F3100	with AirMate	42"	43"	42"	43"	42"	43"	42"	43"
	with Rear Deflector	42"	43"	42"	43"	42"	43"	Not approved for alcove	



CANADA FLOOR PROTECTION FLUSH WALL HEARTH REQUIREMENTS		RESIDENTIAL "C" VENT		RESIDENTIAL CLOSE CLEARANCE		MOBILE HOME CLOSE CLEARANCE		ALCOVE	
		A	B	A	B	A	B	A	B
F1100	with AirMate	38"	38"	38"	37"	38"	38"	38"	38"
	with Rear Deflector	38"	38"	38"	37"	38"	37"	38"	37"
F2400	with AirMate	36"	46"	36"	45"	36"	45"	36"	45"
	with Rear Deflector	36"	46"	36"	45"	36"	45"	36"	45"
S2400	with Step Top	36"	46"	36"	45"	36"	45"	36"	45"
F3100	with AirMate	42"	43"	42"	43"	42"	43"	42"	43"
	with Rear Deflector	42"	43"	42"	43"	42"	43"	Not approved for alcove	

## CORNER INSTALLATIONS

If the rear clearance to combustibles is less than 6", for corner installations the corners may be angled to take advantage of the closer clearances.



For angled corners

USA FLOOR PROTECTION CORNER HEARTH REQUIREMENTS		RESIDENTIAL "C" VENT				RESIDENTIAL CLOSE CLEARANCE				MOBILE HOME CLOSE CLEARANCE			
		A	B	C	D	A	B	C	D	A	B	C	D
F1100	with AirMate	38"	52-3/4"	45-3/4"	21-1/4"	38"	47-3/4"	40-3/4"	16-1/4"	38"	50-3/4"	43-3/4"	19-1/4"
	with Rear Deflector	38"	57-1/4"	49-1/2"	25"	38"	49-3/4"	42-3/4"	18-1/4"	38"	58-1/4"	50-1/4"	26"
F2400	with AirMate	36"	57-1/2"	53-1/2"	26-1/2"	36"	55"	52-1/2"	24-3/4"	36"	55"	52-1/4"	24-3/4"
	with Rear Deflector	36"	58"	54"	27"	36"	57-1/2"	53-1/2"	27"	36"	57-1/2"	53-1/2"	27"
S2400	with Step Top	36"	57-1/2"	53-1/2"	26-1/2"	36"	55"	52-1/2"	24-3/4"	36"	55"	52-1/4"	24-3/4"
F3100	with AirMate	42"	60-3/4"	53"	24-1/4"	42"	60-3/4"	53"	24-1/4"	42"	60-1/4"	54-1/2"	24-1/4"
	with Rear Deflector	42"	63-1/2"	53-1/2"	26-1/4"	42"	60-3/4"	53"	24-1/4"	42"	63"	54-1/2"	24-1/4"

## FLOOR PROTECTION

A combustible floor must be protected by non-combustible material (like tile, concrete board, or certified to UL-1618 or as defined by local codes) extending beneath the heater and a minimum of 8" for F5100 or 6" for all other models (USA) or 8" (250mm) (Canada) from each side and minimum 16" (USA) or 18" (450mm) (Canada) from the front face of stove and minimum of 8" for F5100 or 6" (USA) or 8" (250mm) (Canada) or the rear clearance to combustibles, whichever is smaller, from the rear of the stove.

When installed with horizontal venting, non-combustible floor protection must be installed beneath the flue pipe and extend 2" (51mm) beyond each side.

CANADA FLOOR PROTECTION CORNER HEARTH REQUIREMENTS		RESIDENTIAL "C" VENT				RESIDENTIAL CLOSE CLEARANCE				MOBILE HOME CLOSE CLEARANCE			
		A	B	C	D	A	B	C	D	A	B	C	D
F1100	with AirMate	38"	54-3/4"	47-3/4"	19-1/4"	38"	49-3/4"	42-3/4"	14-1/4"	38"	52-3/4"	45-3/4"	17-1/4"
	with Rear Deflector	38"	59-1/4"	51-1/4"	23"	38"	51-3/4"	44-3/4"	16-1/4"	38"	60-1/4"	52-1/4"	24"
F2400	with AirMate	36"	59-1/2"	55-1/2"	28-1/2"	36"	57"	54-1/2"	26-3/4"	36"	57"	54-1/4"	26-3/4"
	with Rear Deflector	36"	60"	56"	29"	36"	59-1/2"	55-1/2"	29"	36"	59-1/2"	55-1/2"	29"
S2400	with Step Top	40"	59-1/2"	55-1/2"	28-1/2"	40"	57"	54-1/2"	26-3/4"	40"	57"	54-1/4"	26-3/4"
F3100	with AirMate	42"	62-3/4"	55"	22-1/4"	42"	62-3/4"	55"	22-1/4"	42"	62-1/4"	56-1/2"	22-1/4"
	with Rear Deflector	42"	65-1/2"	55-1/2"	24-1/4"	42"	62-3/4"	55"	22-1/4"	42"	65"	56-1/2"	22-1/4"

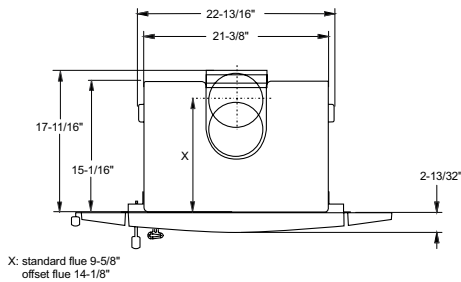
**DISCLAIMER:** Hearth dimensions measured from fuel door opening for both front and side clearances.



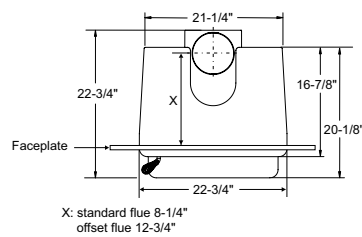
# SPECIFICATIONS - WOOD INSERTS

## Ci1250, i1200, i2400, i3100 & H2100

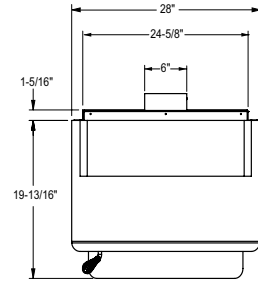
**Ci1250 TOP**



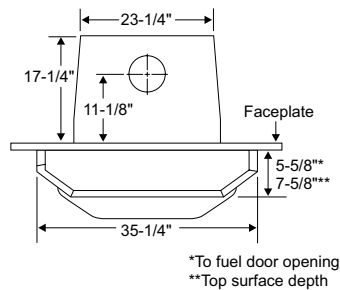
**i1200 TOP**



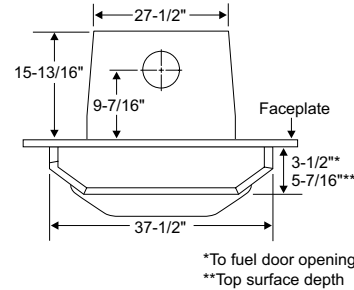
**H2100 TOP**



**i2400 TOP**



**i3100 TOP**



DIMENSIONS	Ci1250	i1200	i2400	i3100	H2100
Firebox Height	22-1/8"	18-3/4"	20-7/8"	22-7/8"	22-1/2"
Height to Top of Flue Collar	22-13/16"	19-1/2"	20-7/8"	23-1/8"	20" (without legs) 28" (with legs)
Faceplate Width	35-15/16"	38"	40"	44"	40-1/4"
Faceplate Height	25-3/4"	26-3/8"	30"	32"	30"
Oversize Faceplate (W x H)	--	44" x 30-3/8"	48" x 33"	50" x 34-1/2"	48" x 33"

\* including ashlip

SPECIFICATIONS	Ci1250	i1200	i2400	i3100	H2100
Maximum BTU*	55,000	55,000	75,000	80,000	70,000
Typical Sq. Ft. Heated**	600 - 1,000	600 - 1,000	1,000 - 2,000	1,800 - 3,000	800 - 1,500
Optimum Efficiency	77.7%	77.7%	77%	75.4%	84.9%
Maximum Log Size	18"	18"	18"	21"	18"
Burn Time (Typical)*	up to 8 hrs.	up to 8 hrs.	up to 8 hrs.	up to 10 hrs.	up to 8 hrs.
Emissions (grams/hour)	3.0 g	3.0 g	3.4 g	4.2 g	3.5 g
Firebox Size	1.4 cu. ft.	1.4 cu. ft.	2.3 cu. ft.	2.9 cu. ft.	1.6 cu. ft.
Flue Size	6"	6"	6"	6"	6"

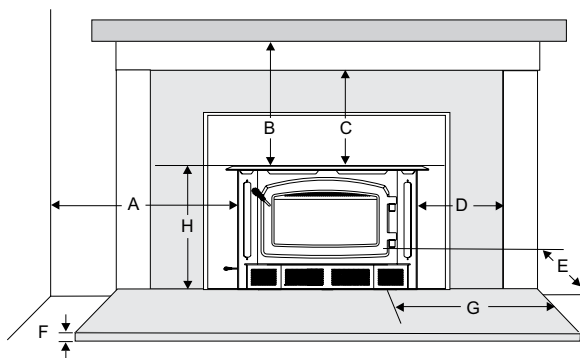
\* Length of burn time and BTU range depend on type of wood, moisture content, climate conditions and installation.

\*\* Varies depending on home floor plan, house layout, heat loss of the house and quality/moisture content of wood.

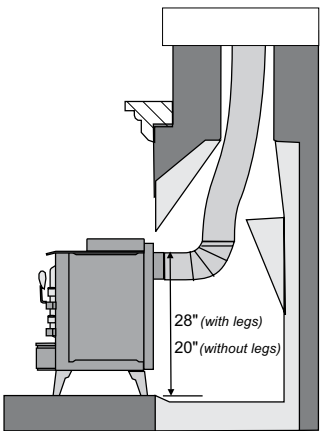
MINIMUM FIREPLACE OPENING	Ci1250	i1200	i2400	i3100	H2100
Width (front)	25"	23"	25"	28"	--
Height	23"	19"	21-1/2"	25"	20" (without legs) 28" (with legs)
Depth	(w/ standard flue adaptor)	15-1/16"	13-3/4"	17"	--
	(w/ offset flue adaptor)	17-11/16"	16-1/2"	--	--

NOTE: All product specifications are subject to change without notice. Before installing refer to the relevant product manual for full and up-to-date information.

# SPECIFICATIONS - WOOD INSERTS



## HEARTH HEATER MINIMUM FIREPLACE OPENINGS



Illustrates Hearth Heater with classic leg option.

### Masonry & Factory Built Fireplace Clearances

The minimum required clearances to combustible materials when installed into a masonry fireplace are:

UNITS	ADJACENT SIDE WALL (TO SIDE)	MANTEL (TO TOP)	TOP FACING (TO TOP)	SIDE FACING (TO SIDE)	MIN. HEARTH EXTENSION*		MIN. HEARTH ELEVATION *	MIN. HEARTH SIDE WIDTH **		FROM TOP OF INSERT DOOR (DEPENDING ON MODEL)
	A	B	C	D	E (USA)	E (CANADA)	F	G (USA)	G (CANADA)	H
Ci1250	15"	20"	14"	7-3/8"	16"	18"	1-1/2"	6"	8"	20-1/2"
i1200	15"	20"	14"	7-3/8"	16"	18"	1-1/2"	6"	8"	18-3/4"
i2400	11"	20"	12"	8"	18" ***	18"	1/2"	8"	8"	20"
i3100	13"	19"	18"	6-1/2"	16"	18"	1-1/2"	6"	8"	23-1/4"
H2100	10"	25"	14"	8-1/2"	16"	18"	1-1/2"	6"	8"	22-1/2"

\* Note: If the hearth extension is flush with the floor (item F) it must extend 19.5" in front of the body face (item E) (i1200, i3100 & H2100 only).

\*\* Note: Hearth extension width (G) is measured from edge of fuel door to side of hearth.

\*\*\* Note: If the hearth is raised a minimum 3.5", hearth can be 16" (U.S. only).

## CUSTOMER CARE



Visit the Regency website for maintenance tips and how-to videos!

<http://www.regency-fire.com/Customer-Care.aspx>



FIREPLACE SELECTION WORKSHEET

We want you to enjoy your beautiful Regency fireplace for years to come. To help you figure out which product is just right for your home, fill in the following worksheet. Once complete, visit your nearest Regency dealer. Your professional Regency dealer will assess your needs - including local building codes - and install your Regency.

1. BASIC PRODUCT FUNCTION QUESTIONS

- a. I would like my unit to provide me with:

☐ Supplemental heating

☐ Priority heating
- b. The room/rooms I would like to heat are: 

sq. ft.

2. FIREPLACE PRODUCT TYPE AND MEASUREMENTS

- a. I am:

☐ Installing a new fireplace

☐ Installing into an existing fireplace
- b. Fill in the following measurements:

Ceiling Height:

Location in the room:
- c. What is the:

Flooring material:

Wall material:

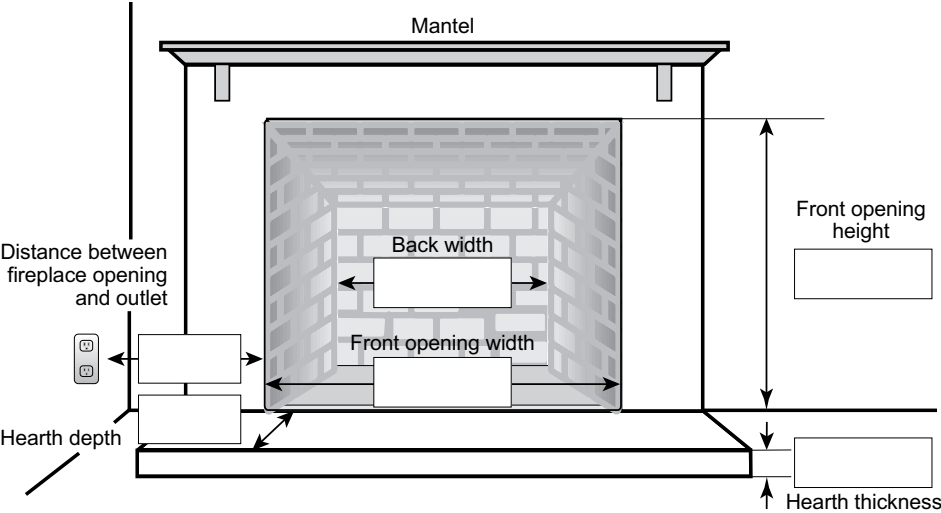
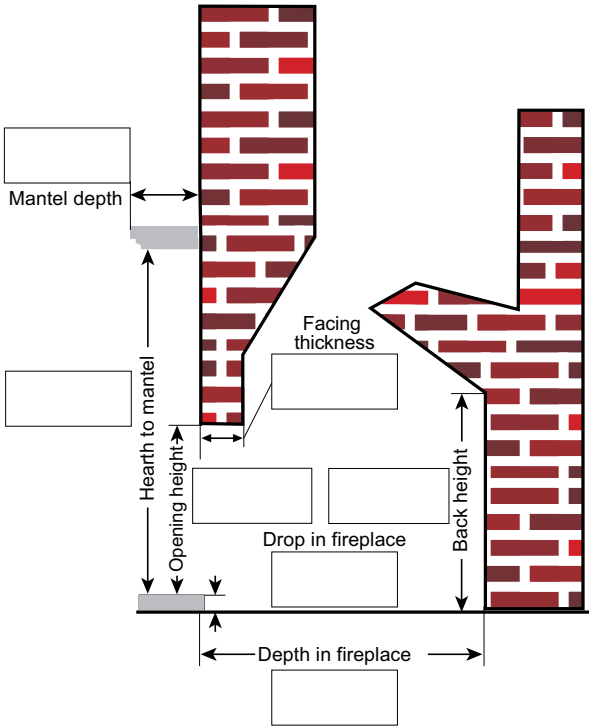
Ceiling material:
- d. Fireplace opening dimensions:

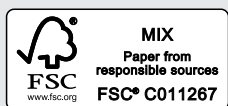
Width (front):

Width (back):

Height:

Depth:





your Regency dealer

[www.regency-fire.com](http://www.regency-fire.com)

©2019 FPI Fireplace Products International Ltd. Regency® and Regency Alterra®, Regency Classic™ and Hampton® are registered or proprietary trademarks of FPI Fireplace Products International Ltd. All rights reserved. Flue adaptor patent #7784458. Printed in Canada (07/19)  
Part no. 944-218